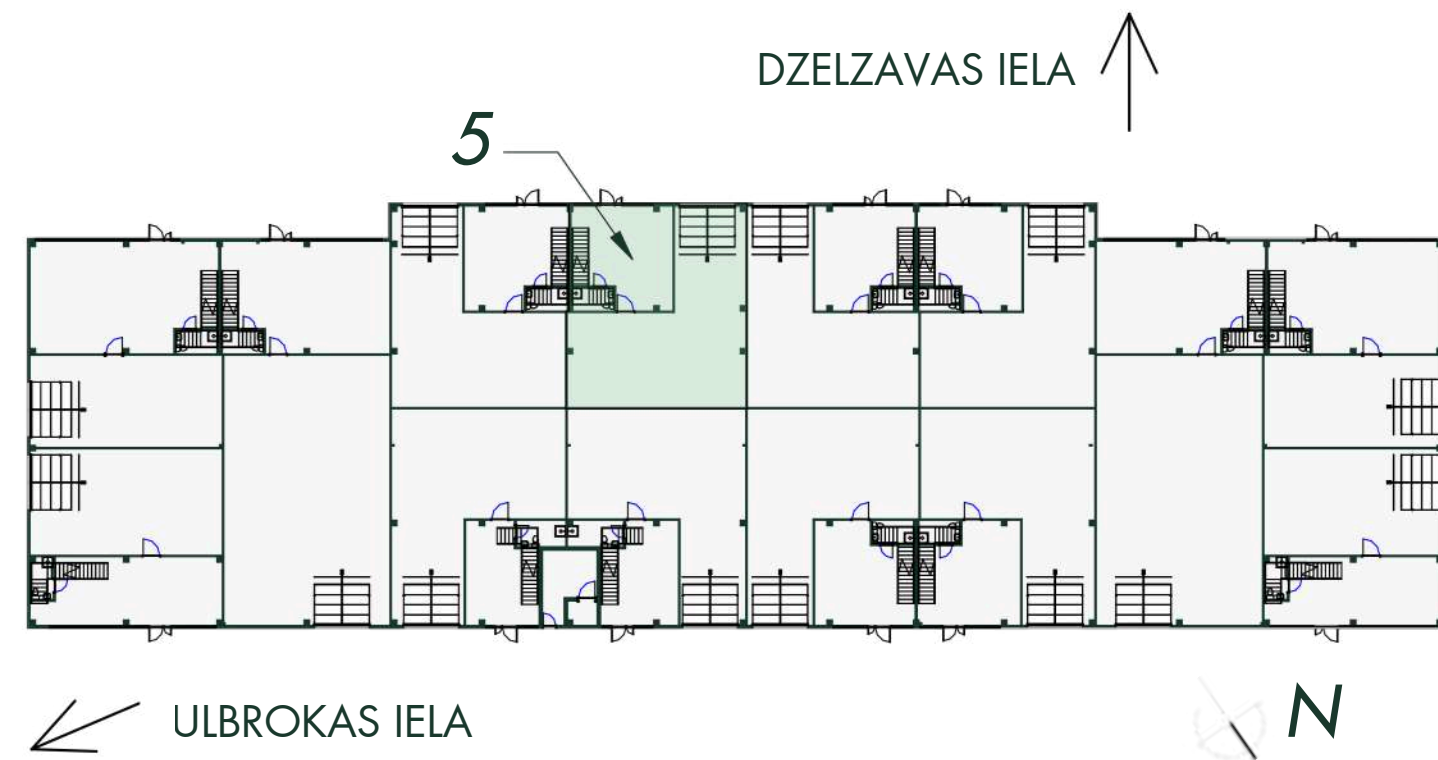




D ēka - Stok Ofiss Nr. 5
Building D - Stock office No. 5



ĒKAS SHĒMA
BUILDING SCHEME

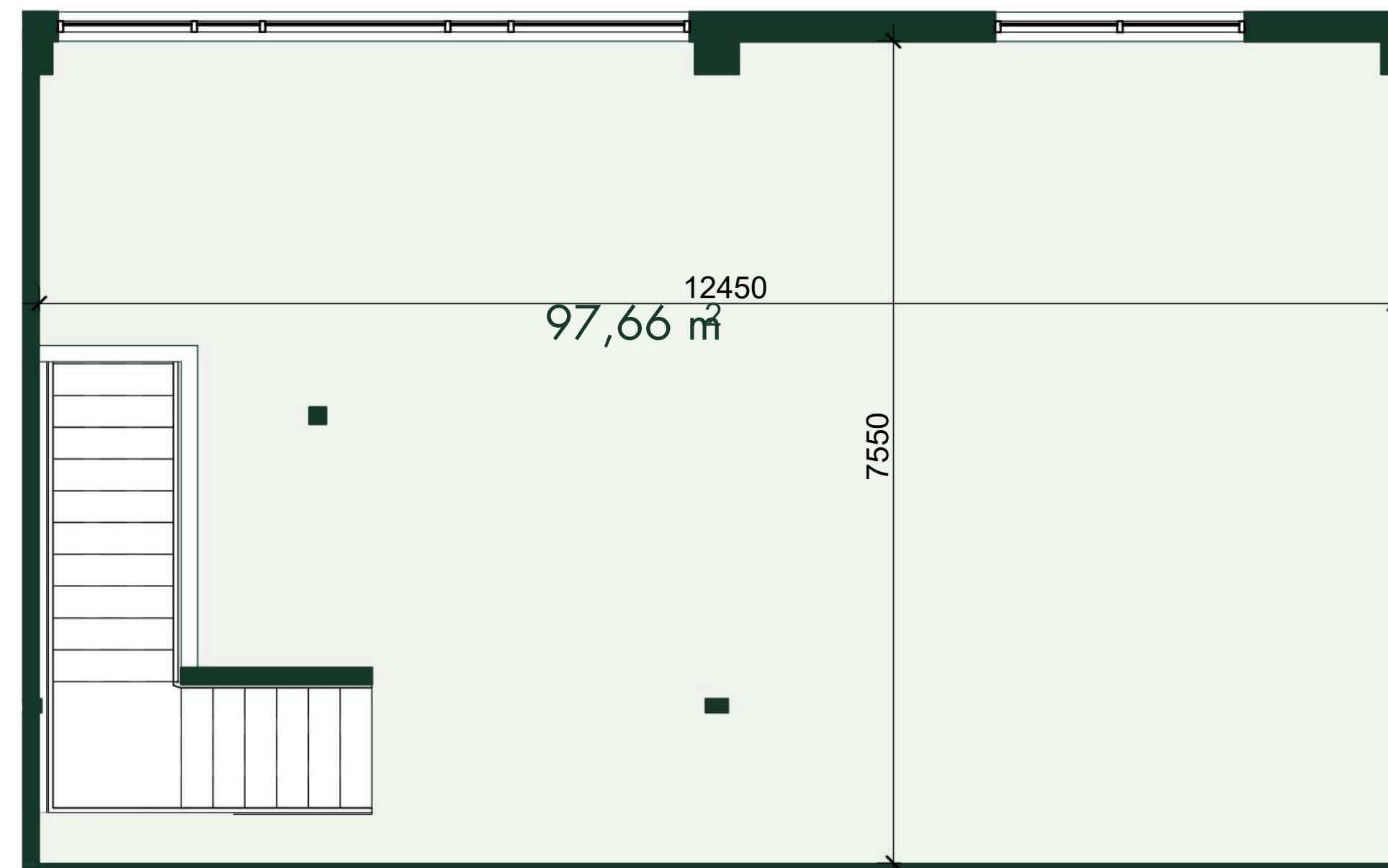
NOMAS TELPU NR. 5 EKSPĻIKĀCIJA
DESCRIPTION OF RENTAL PREMISES NO. 5

Stāvs Floor	Nosaukums Name	Platība (m ²) Area (m ²)
1	Veikals Showroom	61,14
	Noliktava Warehouse	129,64
2	Birojs Office	97,66
Kopējā īrnieka Nr.5 Total tenant No.5		288,44

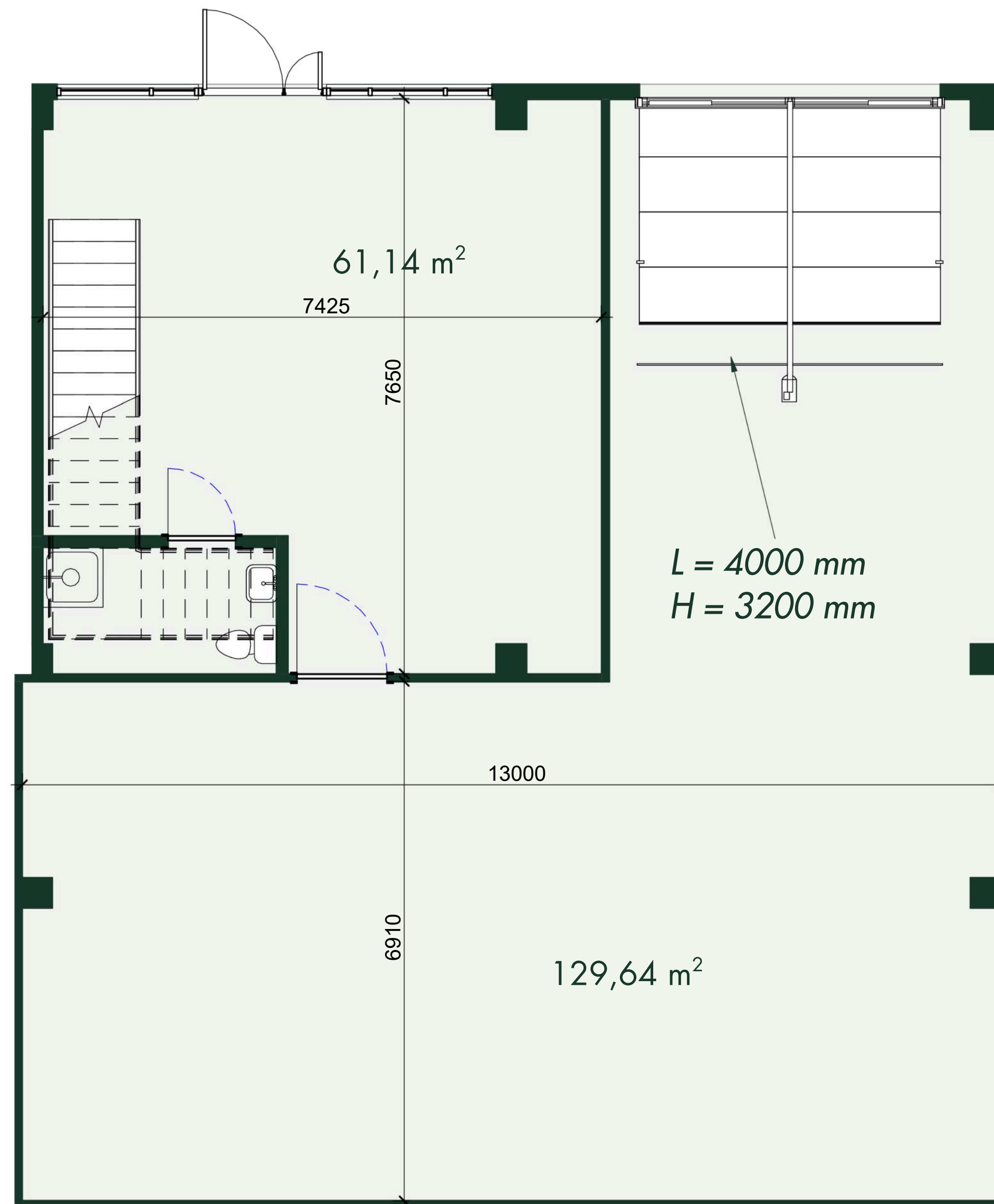
Contacts

Jana Sumaruka
Rent inquiries (LV & ENG)
jana@estmakcapital.eu
371 262 32 225

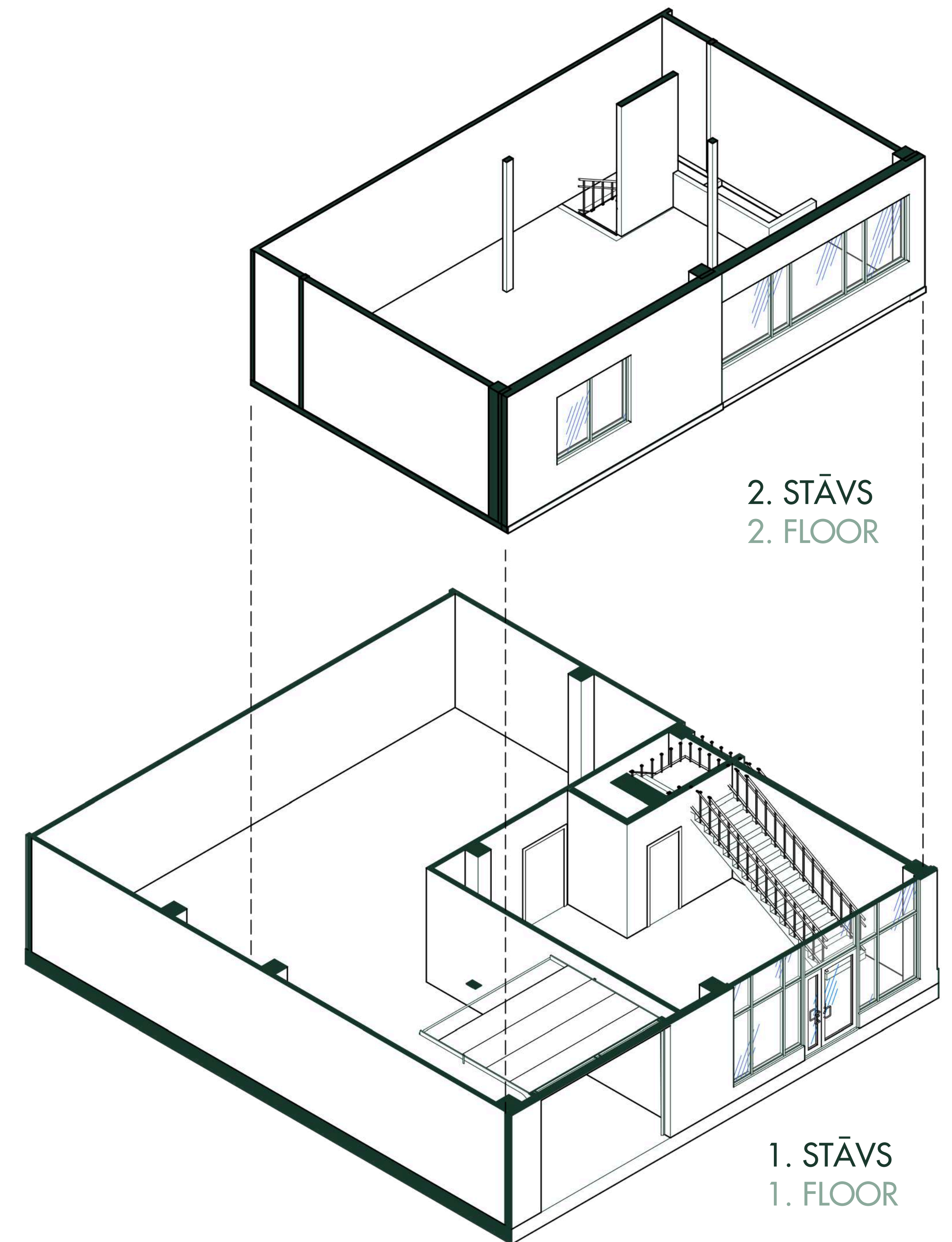
Jekaterina Šumigai
Rent inquiries (EST & ENG)
jekaterina@estmakcapital.eu
372 5464 0477



2. STĀVA PLĀNS
2. FLOOR PLAN

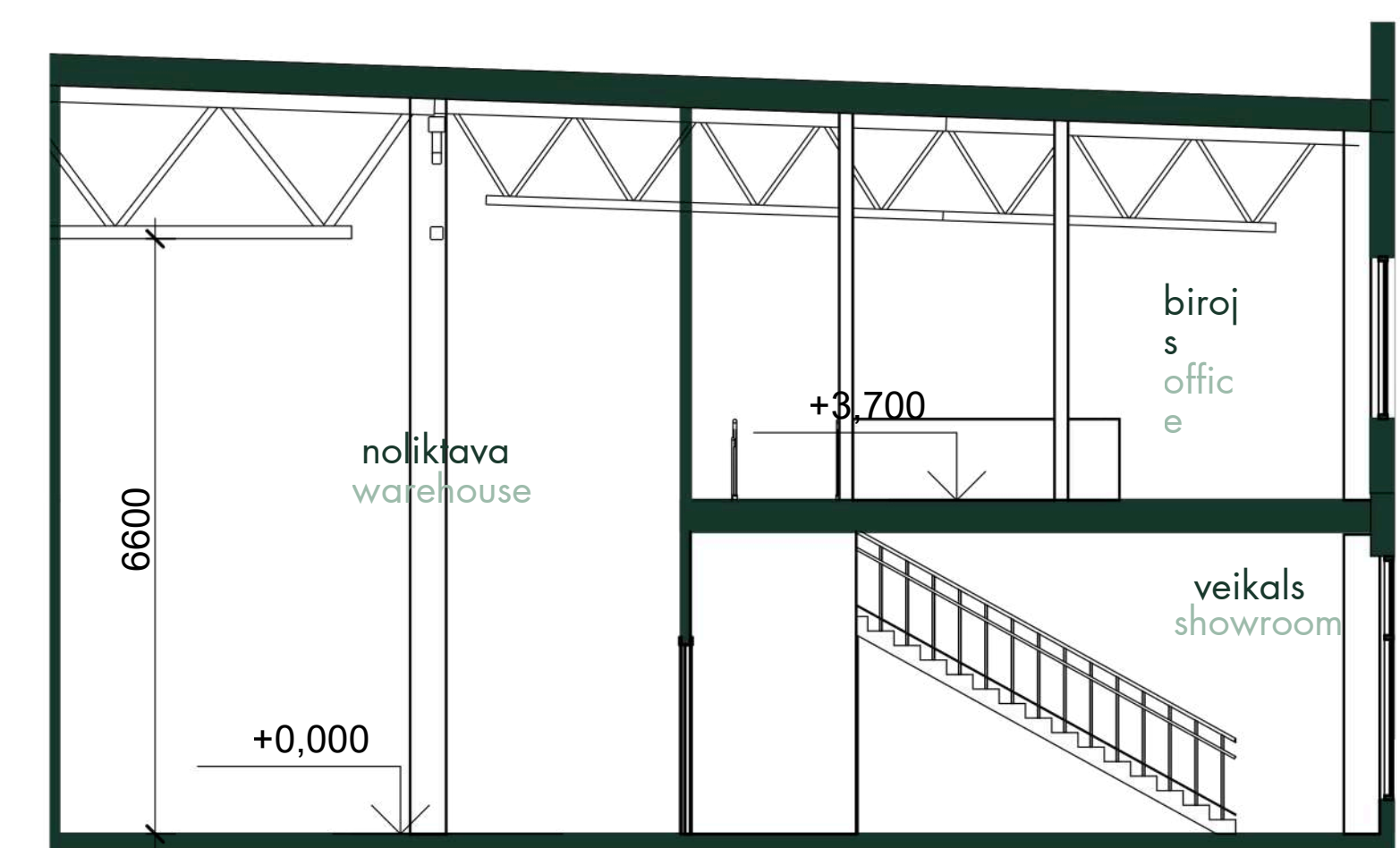


1. STĀVA PLĀNS
1. FLOOR PLAN



2. STĀVS
2. FLOOR

1. STĀVS
1. FLOOR



ŠĶĒRSGRIZUMS 1-1
SECTION 1-1