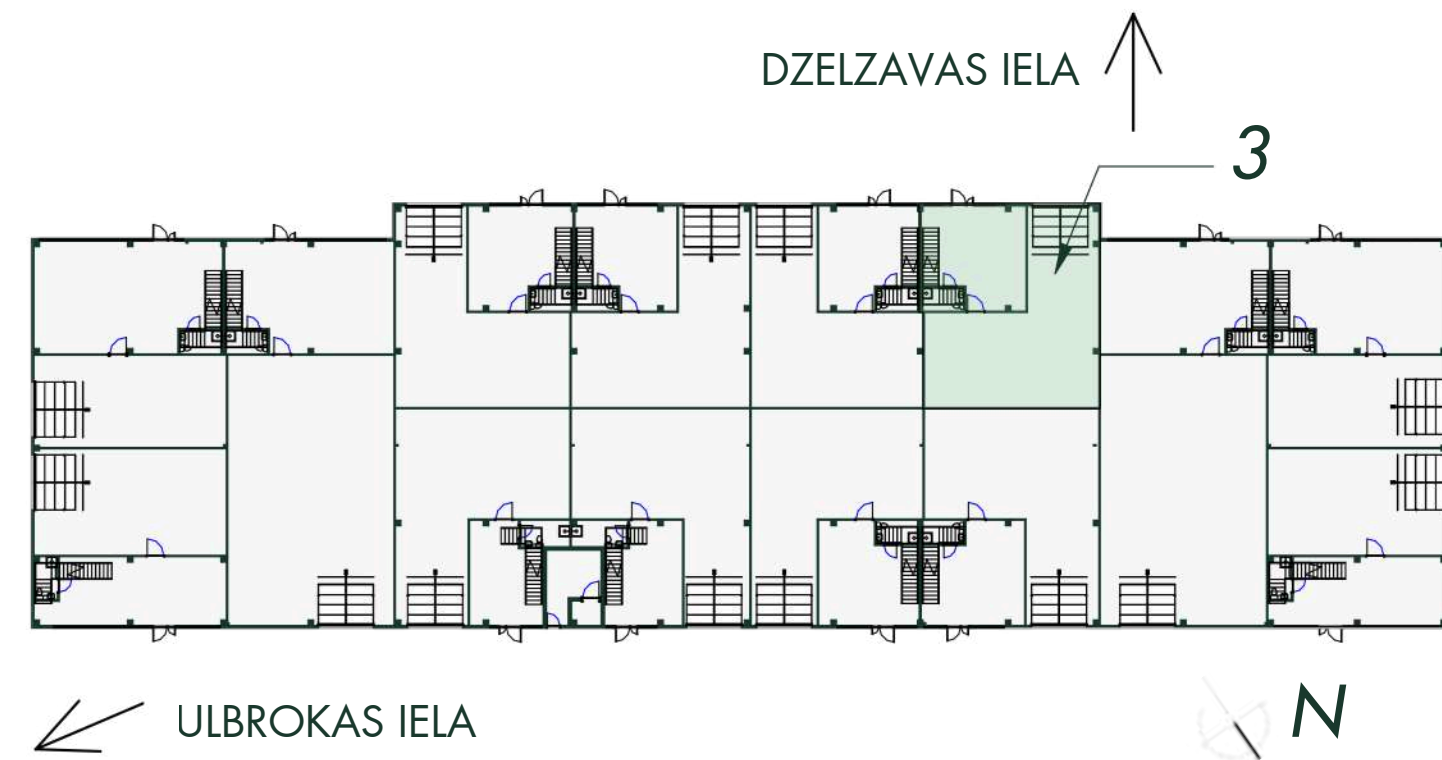




D ēka - Stok Ofiss Nr. 3
Building D - Stock office No. 3



ĒKAS SHĒMA
BUILDING SCHEME

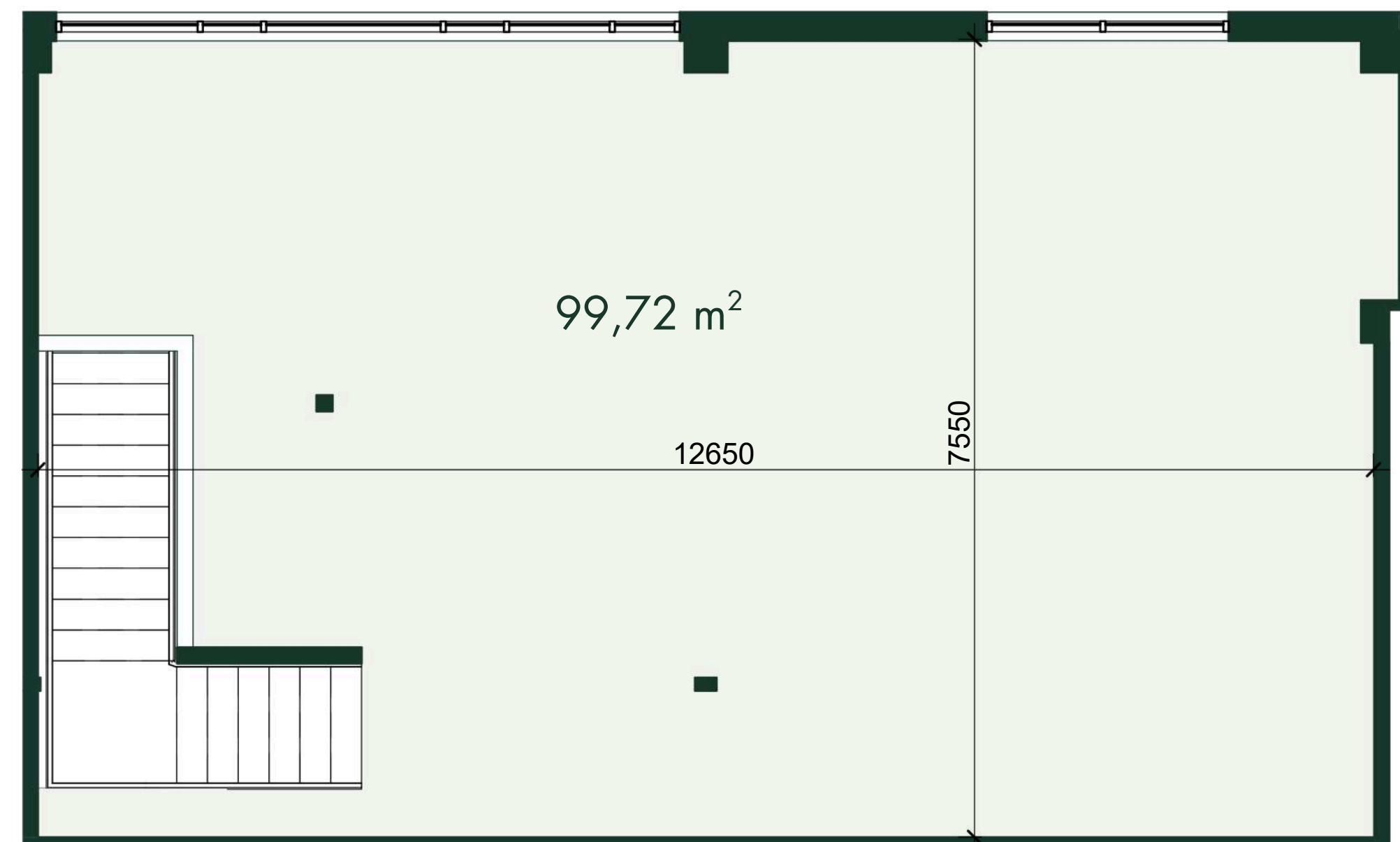
NOMAS TELPU NR. 3 EKSPLIKĀCIJA
DESCRIPTION OF RENTAL PREMISES NO. 3

Stāvs Floor	Nosaukums Name	Platība (m ²) Area (m ²)
1	Veikals Showroom	62,56
	Noliktava Warehouse	127,55
2	Birojs Office	99,72
Kopējā īrnieka Nr.3 Total tenant No.3		289,83

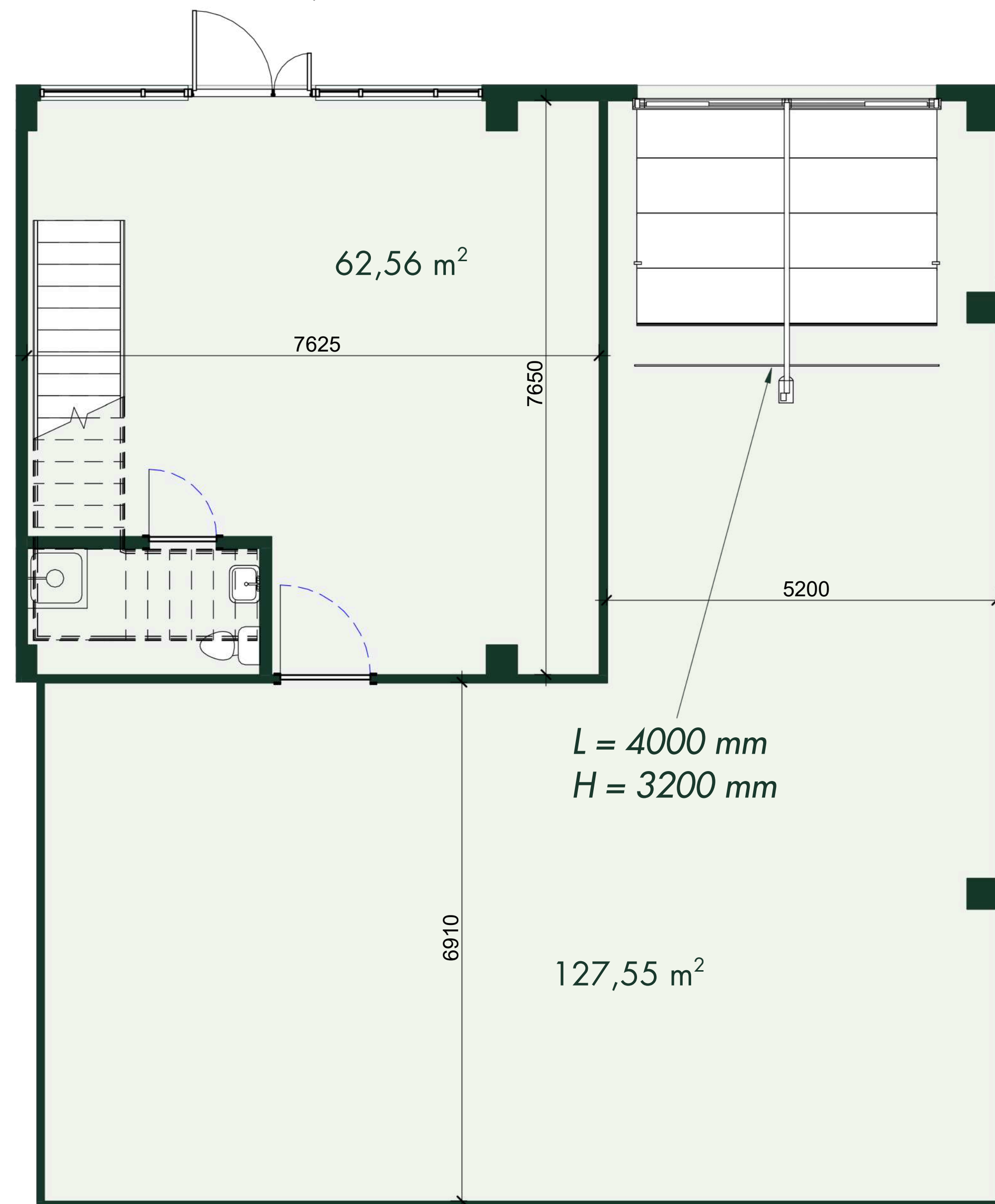
Contacts

Jana Sumaruka
Rent inquiries (LV & ENG)
jana@estmakcapital.eu
371 262 32 225

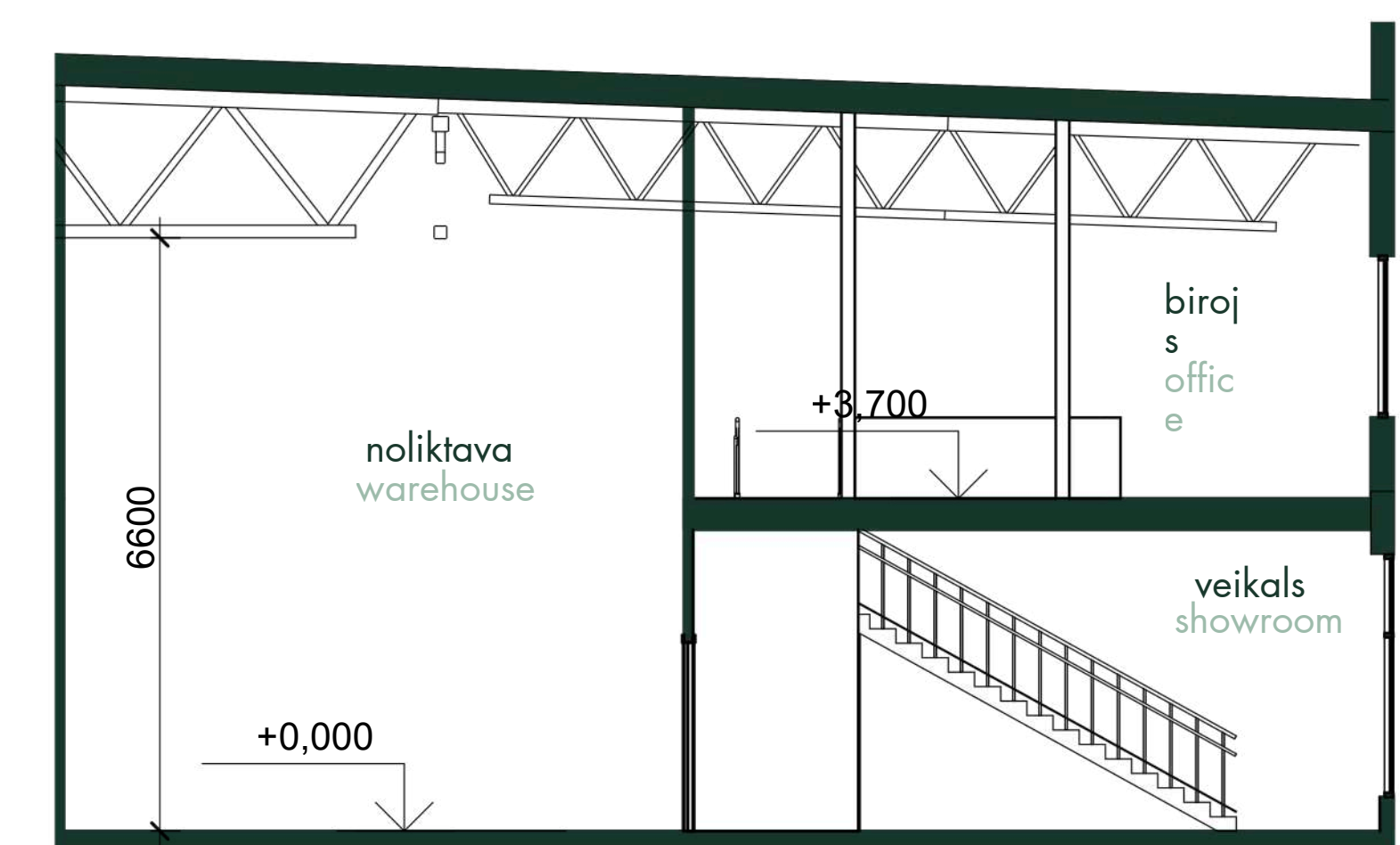
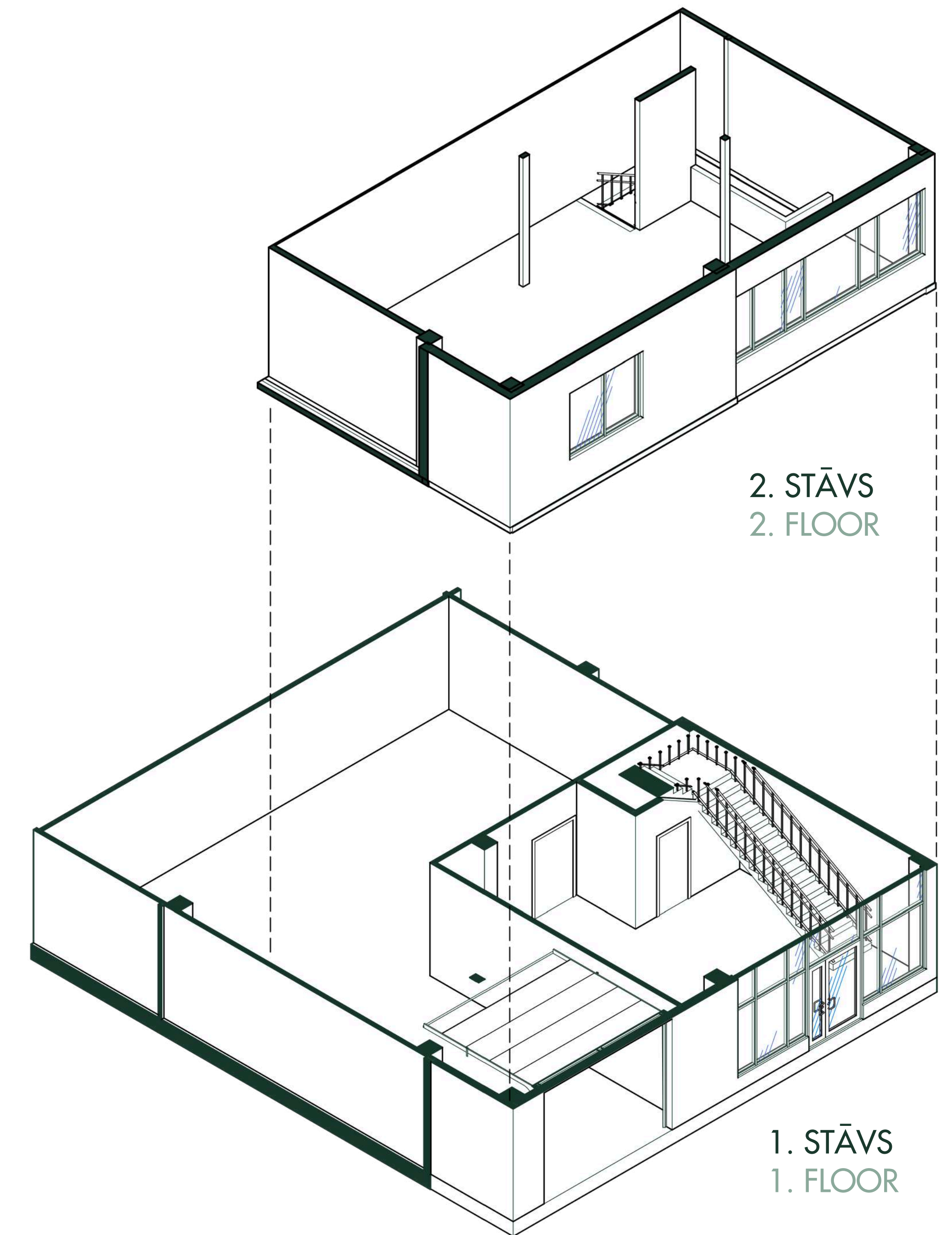
Jekaterina Šumigai
Rent inquiries (EST & ENG)
jekaterina@estmakcapital.eu
372 5464 0477



2. STĀVA PLĀNS
2. FLOOR PLAN



1. STĀVA PLĀNS
1. FLOOR PLAN



ŠĶĒRSGRIEZUMS 1-1
SECTION 1-1