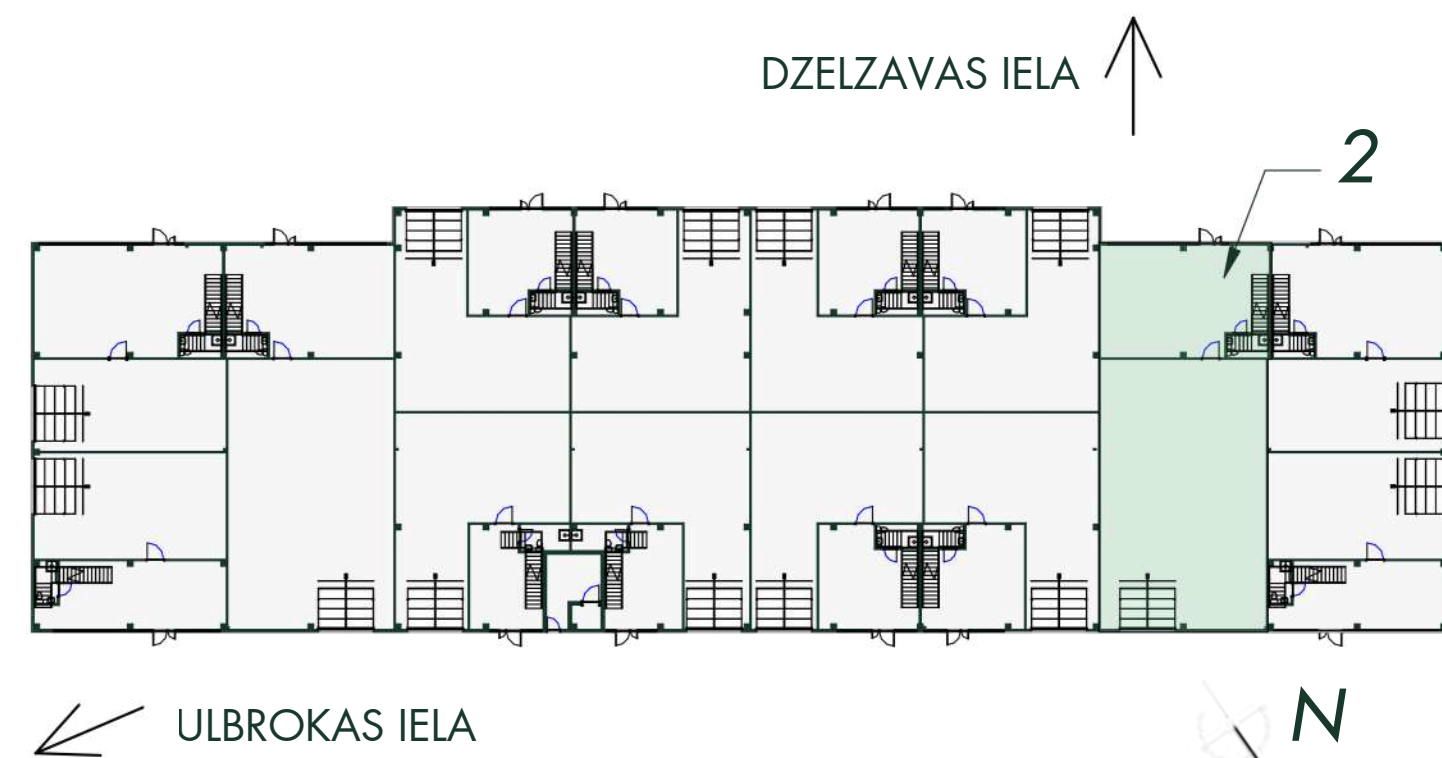


D ēka - Stok Ofiss Nr. 2
Building D - Stock office No. 2



ĒKAS SHĒMA
BUILDING SCHEME

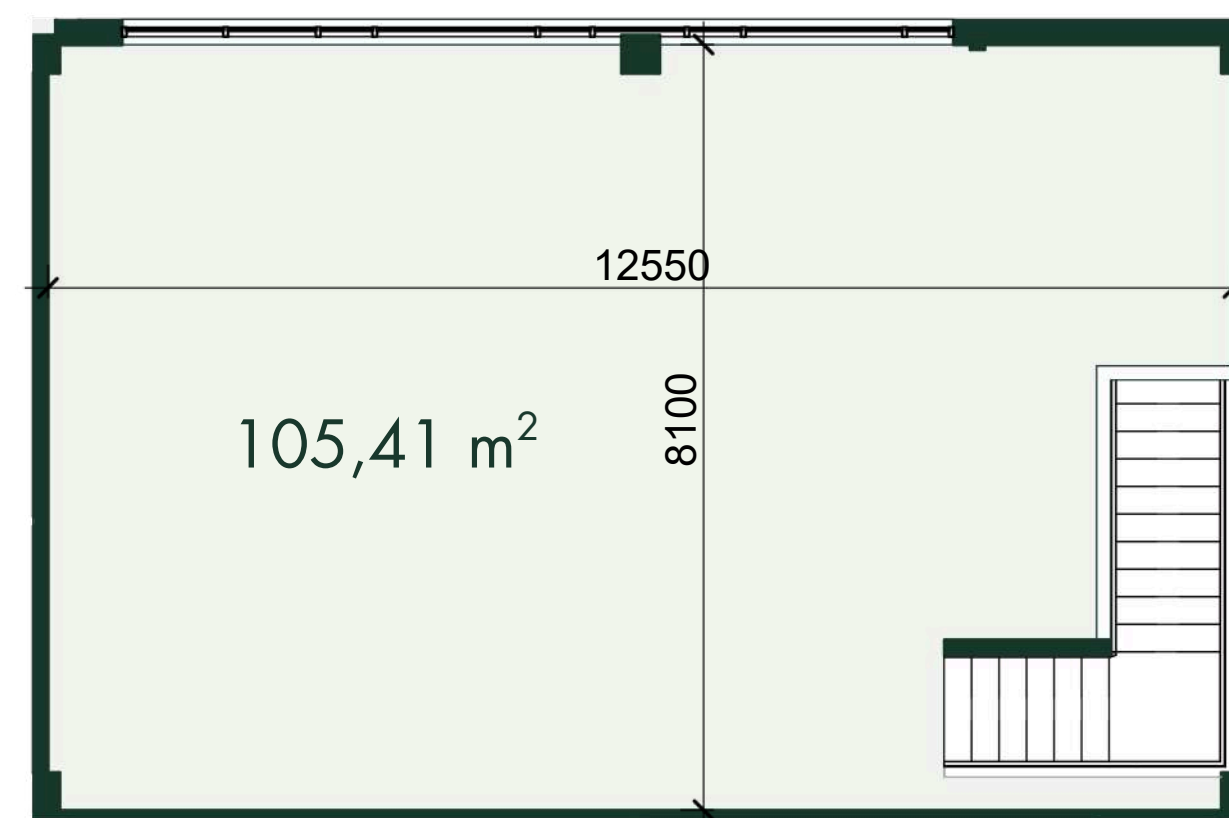
NOMAS TELPU NR. 2 EKSPLIKĀCIJA
DESCRIPTION OF RENTAL PREMISES NO. 2

Stāvs Floor	Nosaukums Name	Platība (m ²) Area (m ²)
1	Veikals Showroom	106,01
	Noliktava Warehouse	237,08
2	Birojs Office	105,41
Kopējā īrnieka Nr.2 Total tenant No.2		448,50

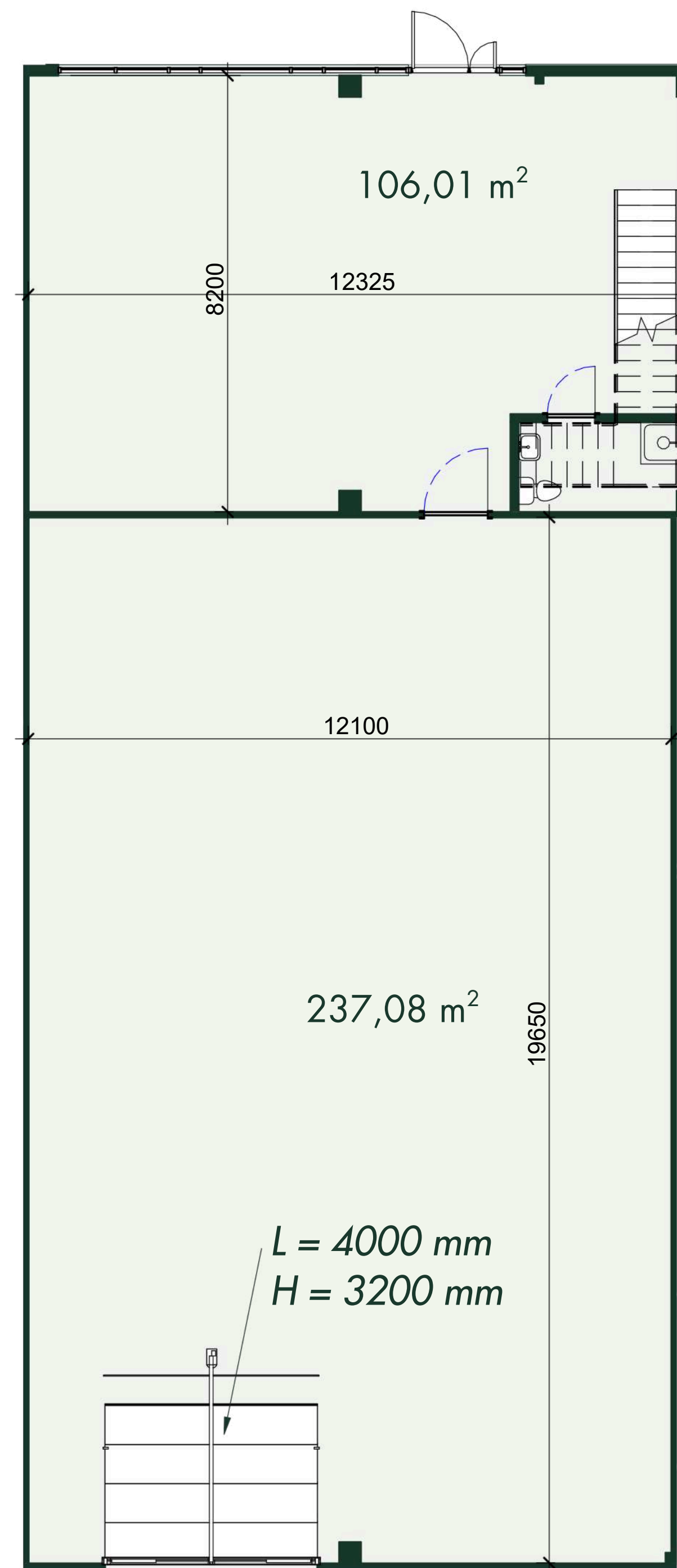
Contacts

Jana Sumaruka
Rent inquiries (LV & ENG)
jana@estmakcapital.eu
371 262 32 225

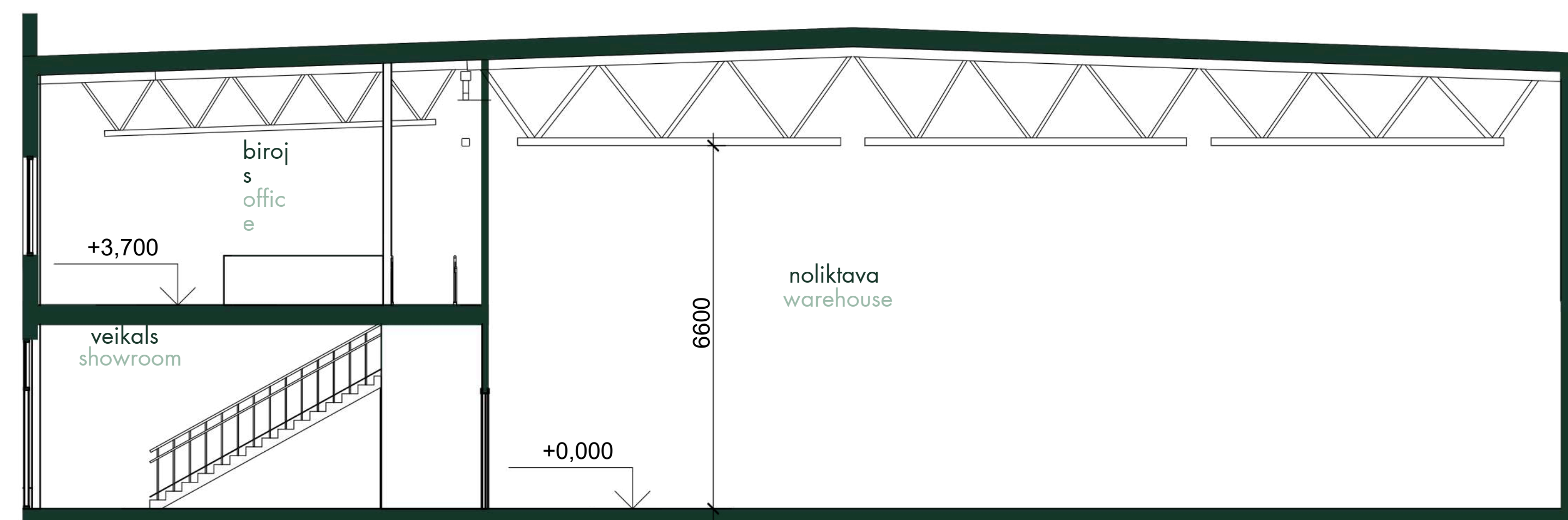
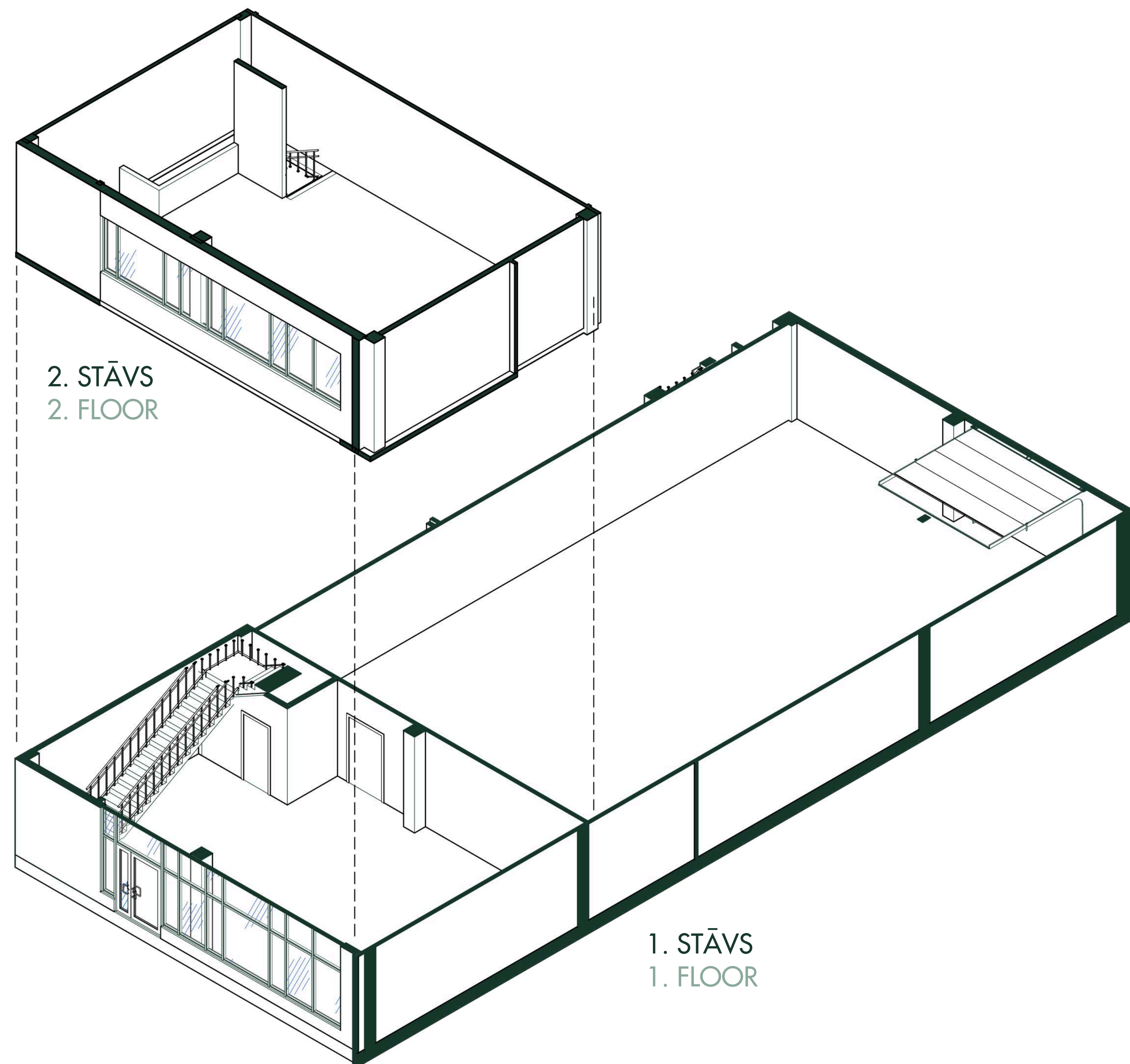
Jekaterina Šumigai
Rent inquiries (EST & ENG)
jekaterina@estmakcapital.eu
372 5464 0477



2. STĀVA PLĀNS
2. FLOOR PLAN



1. STĀVA PLĀNS
1. FLOOR PLAN



ŠĶĒRSGRIZUMS 1-1
SECTION 1-1