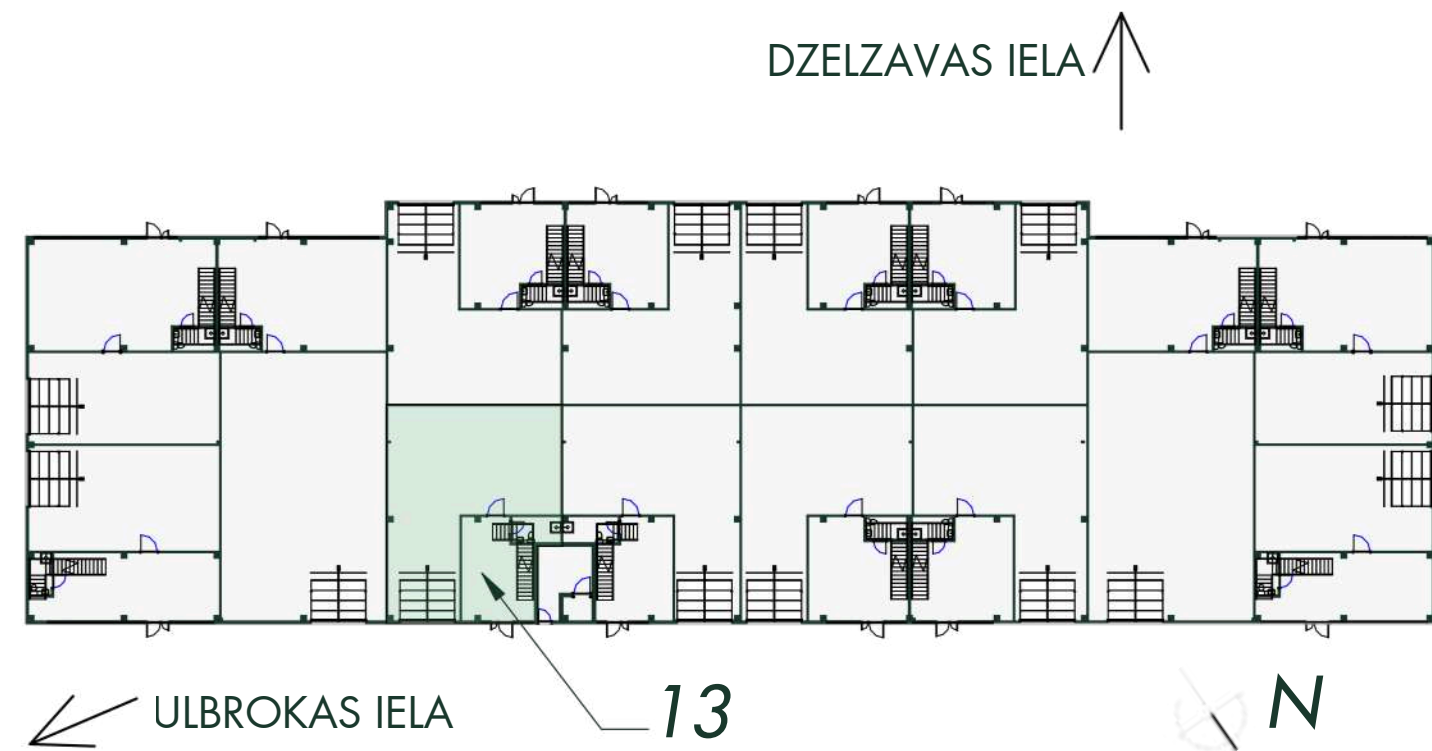




D ēka - Stok Ofiss Nr. 13  
Building D - Stock office No. 13



ĒKAS SHĒMA  
BUILDING SCHEME

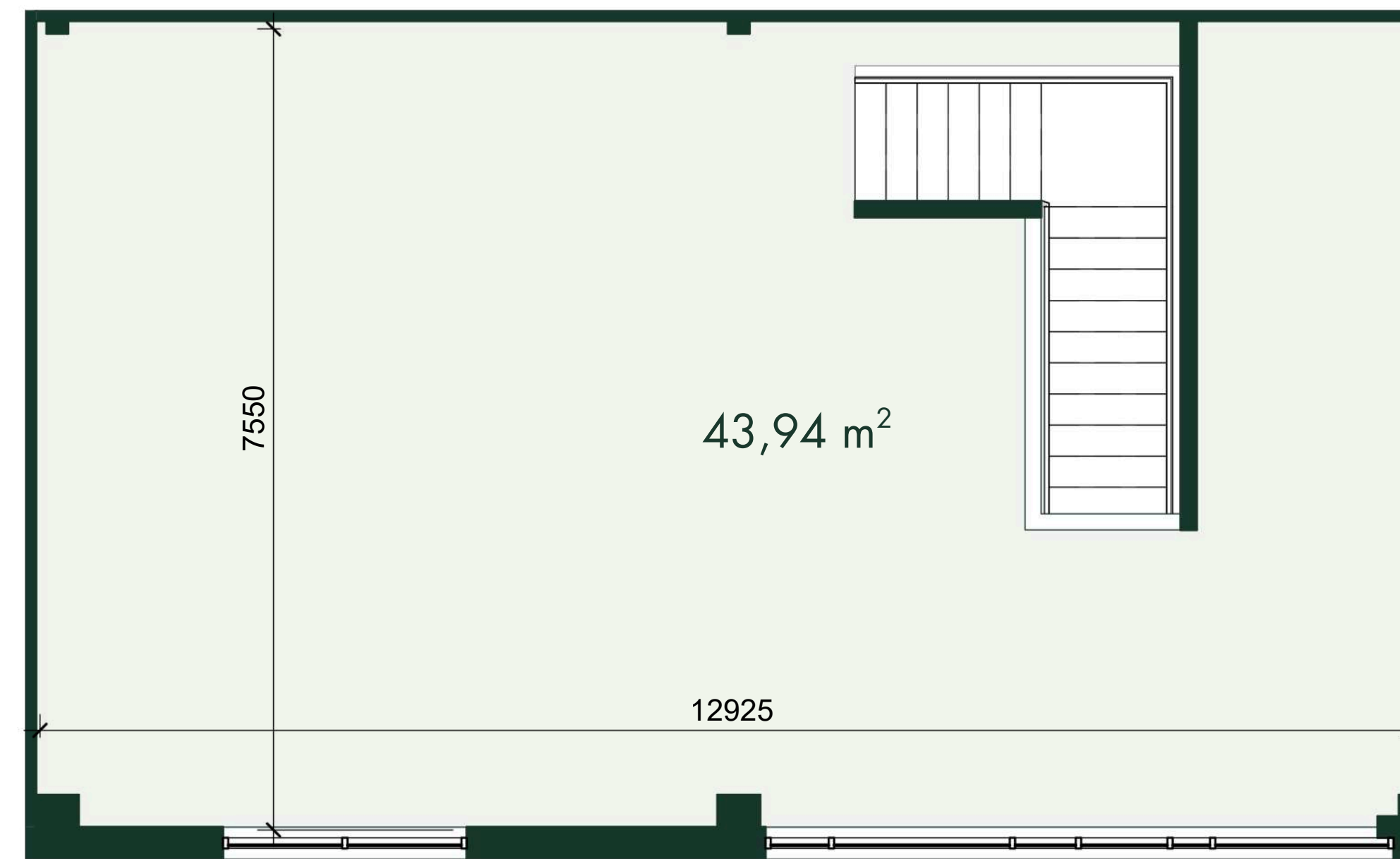
NOMAS TELPU NR. 13 EKSPLIKĀCIJA  
DESCRIPTION OF RENTAL PREMISES NO. 13

Stāvs Floor	Nosaukums Name	Platība (m2) Area (m2)
1	Veikals Showroom	48,58
	Noliktava Warehouse	142,35
2	Birojs Office	101,03
Kopējā īrnieka Nr.13 Total tenant No.13		291,97

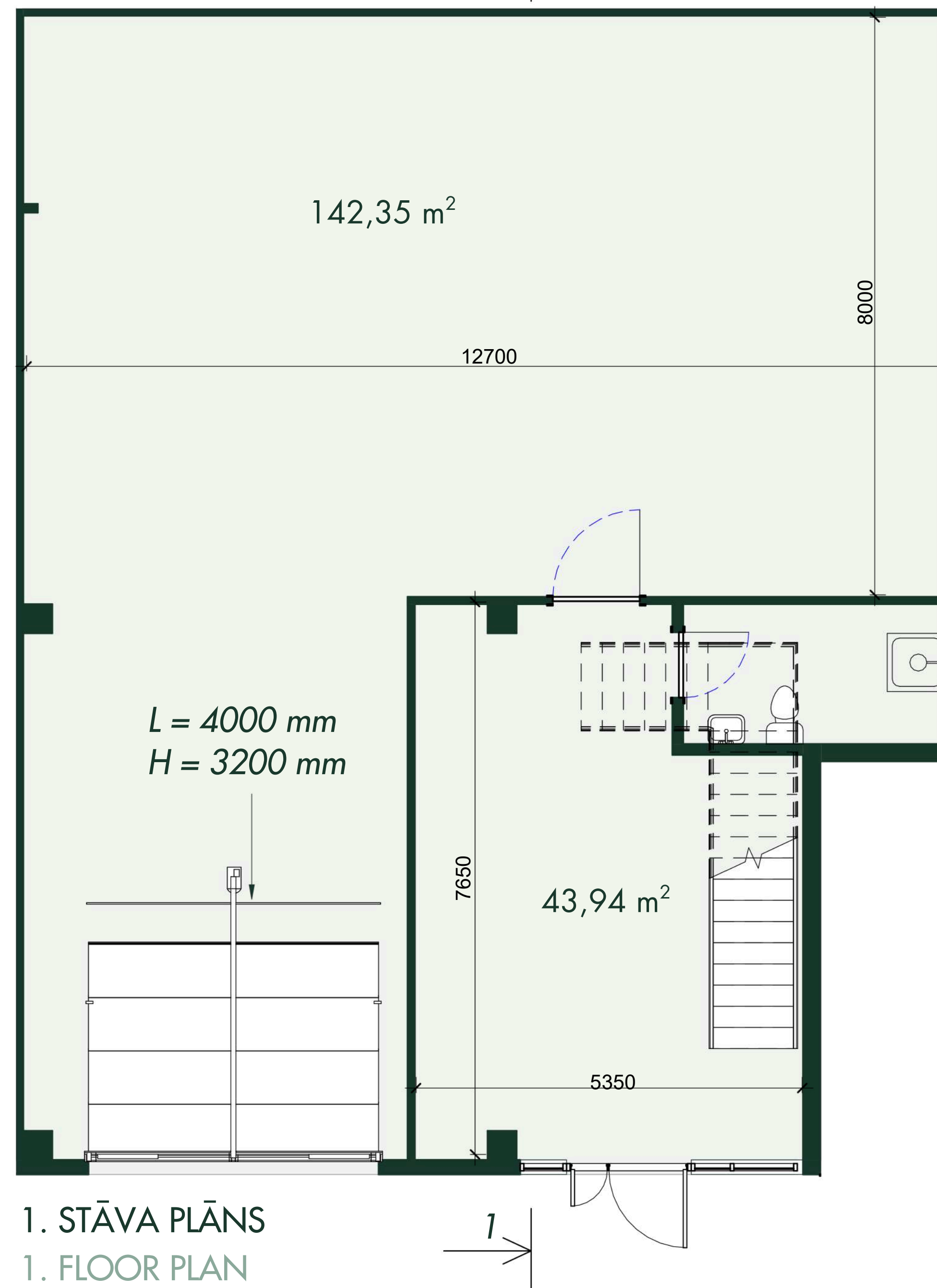
Contacts

**Jana Sumaruka**  
Rent inquiries (LV & ENG)  
[jana@estmakcapital.eu](mailto:jana@estmakcapital.eu)  
371 262 32 225

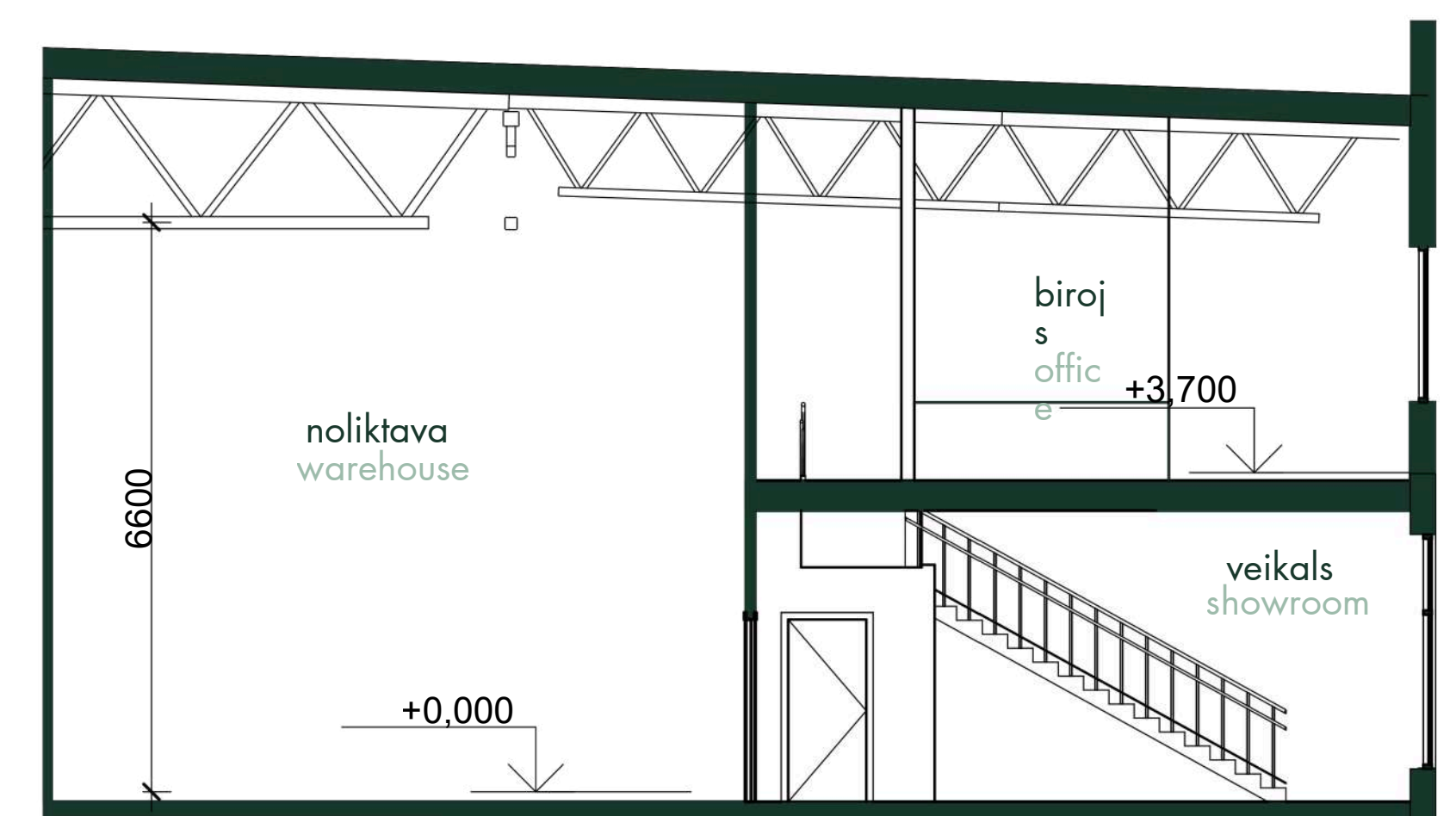
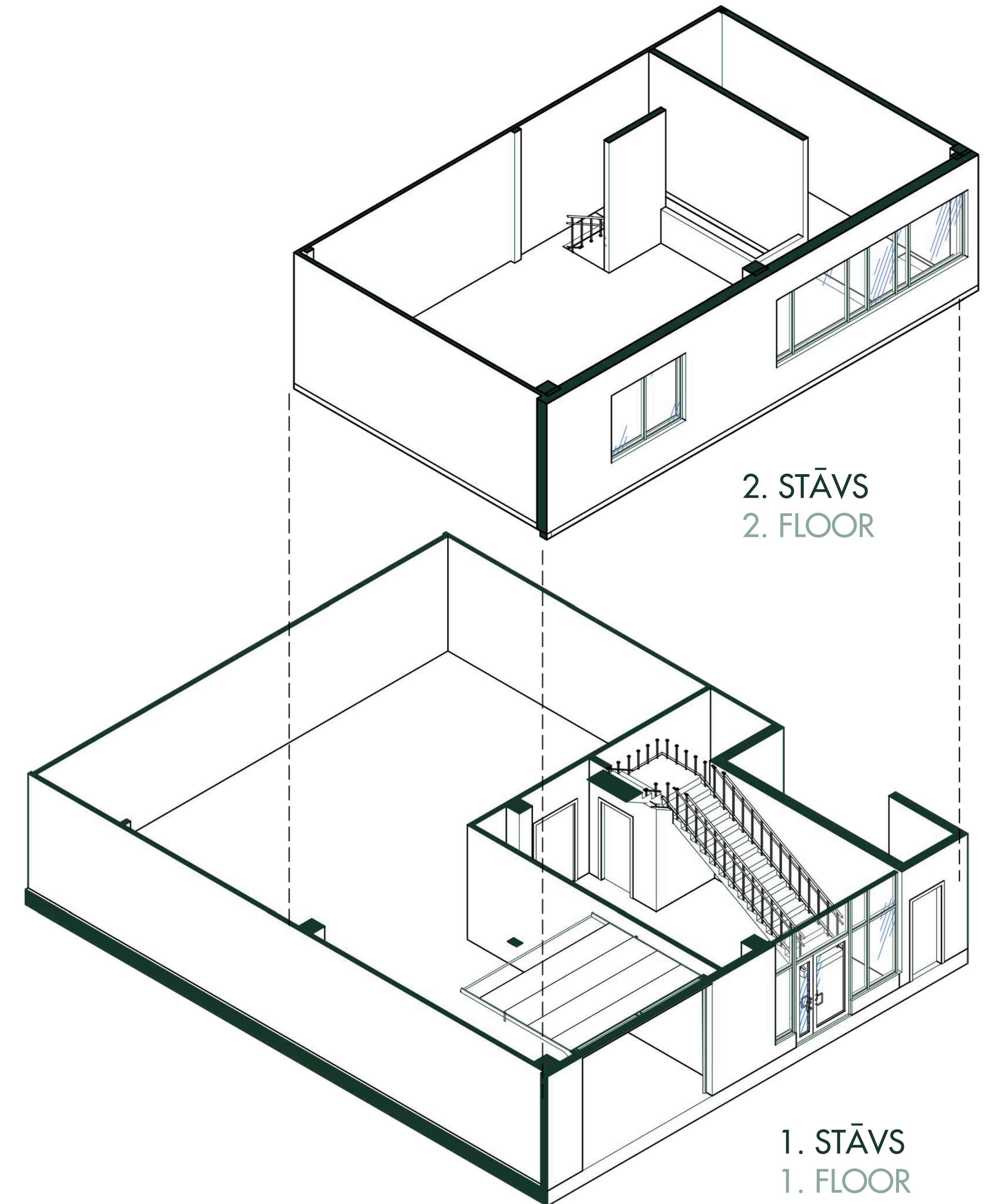
**Jekaterina Šumigai**  
Rent inquiries (EST & ENG)  
[jekaterina@estmakcapital.eu](mailto:jekaterina@estmakcapital.eu)  
372 5464 0477



2. STĀVA PLĀNS  
2. FLOOR PLAN



1. STĀVA PLĀNS  
1. FLOOR PLAN



ŠĶĒRSGRIEZUMS 1-1  
SECTION 1-1