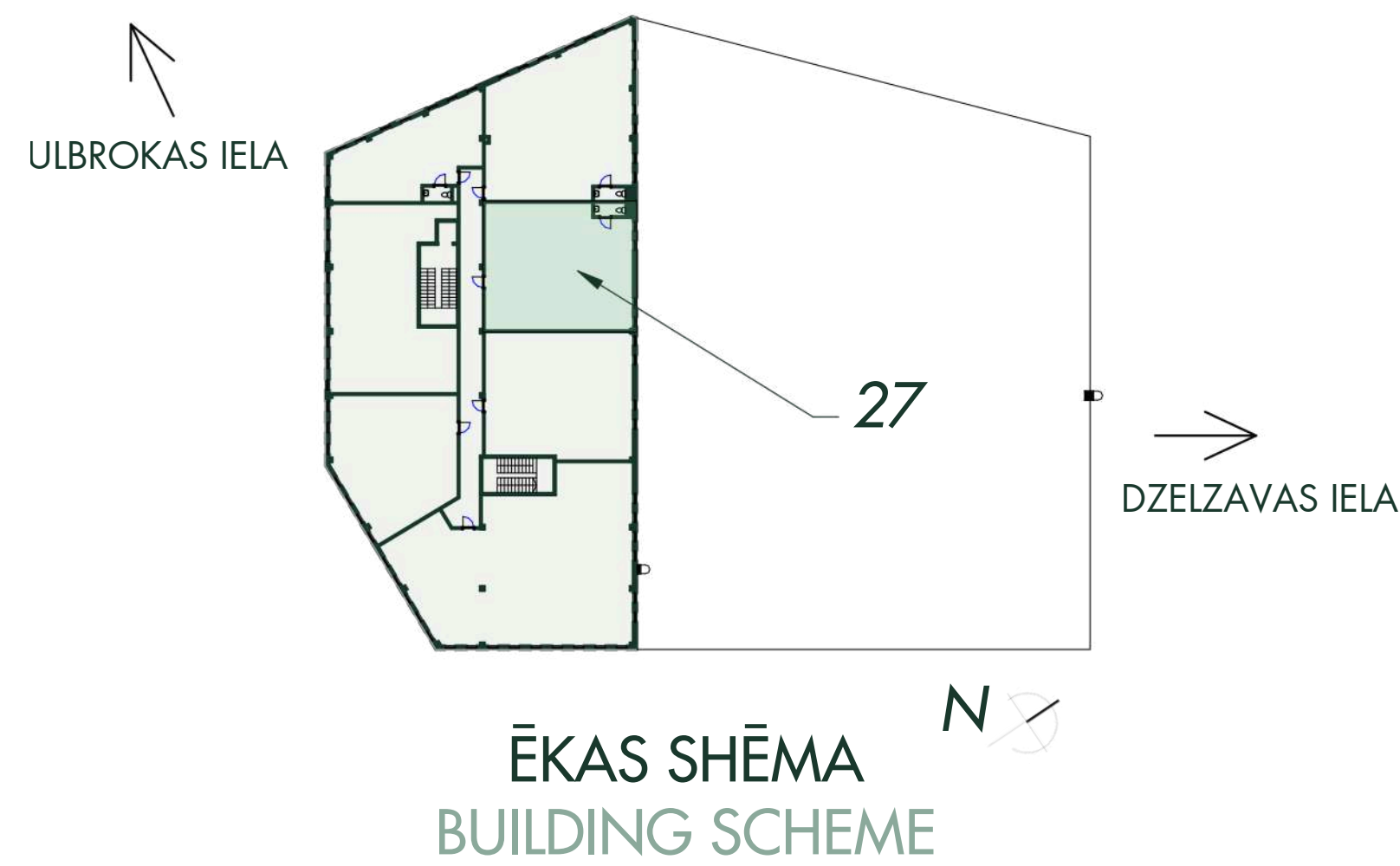
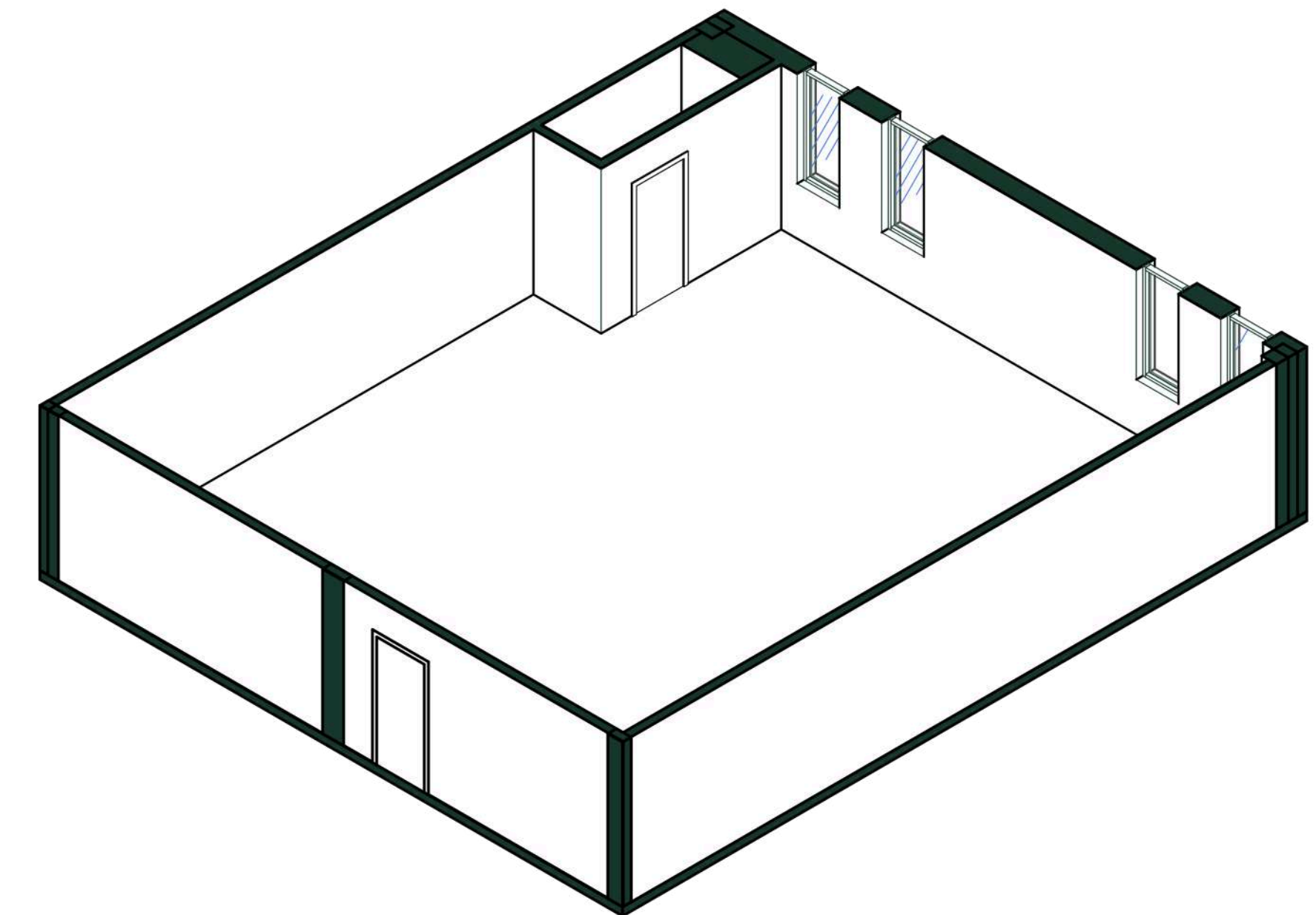


A ēka - Birojs Nr. 27
 Building A - Office No. 27

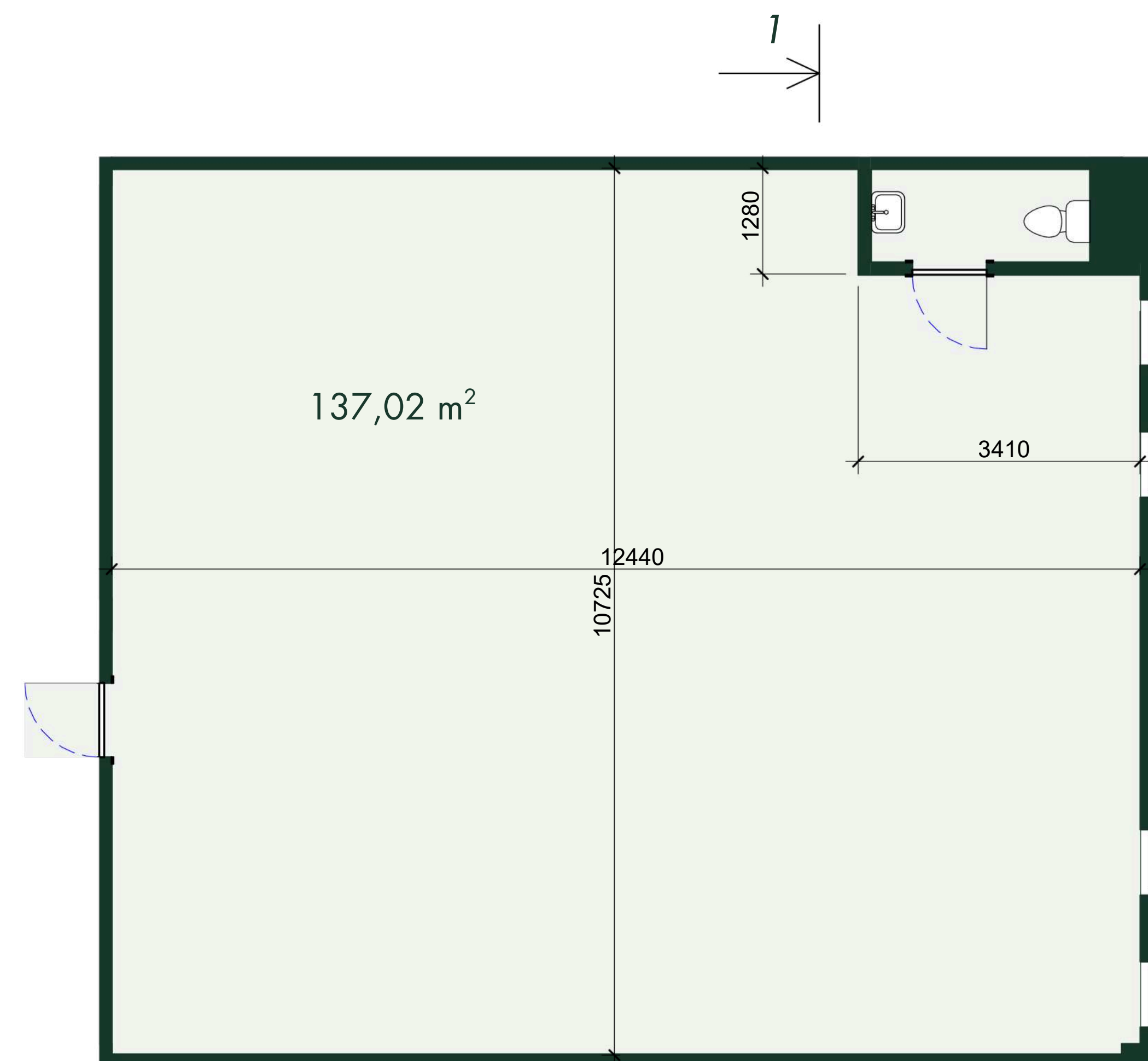


ŠĶĒRSGRIEZUMS 1-1
 SECTION 1-1

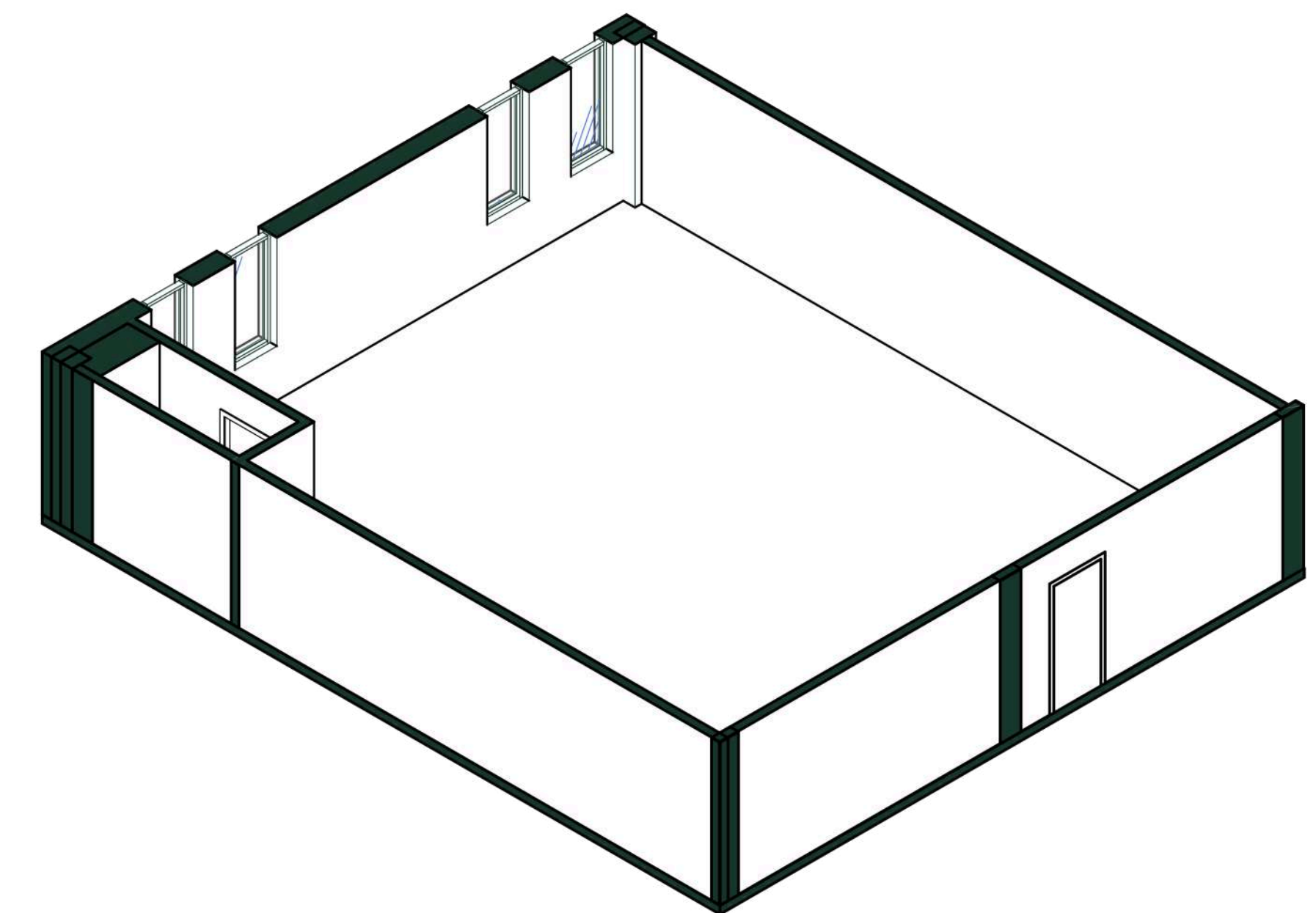


NOMAS TELPU NR. 27 EKSPĻIKĀCIJA
 DESCRIPTION OF RENTAL PREMISES NO. 27

Stāvs Floor	Nosaukums Name	Platība (m ²) Area (m ²)
2	Birojs Office	137,02
Kopējā īrnieka Nr.27 Total tenant No.27		137,02



STĀVA PLĀNS
 FLOOR PLAN



Contacts

Jana Sumaruka

Rent inquiries (LV & ENG)

jana@estmakcapital.eu

371 262 32 225

Jekaterina Šumigai

Rent inquiries (EST & ENG)

jekaterina@estmakcapital.ee

372 5464 0477