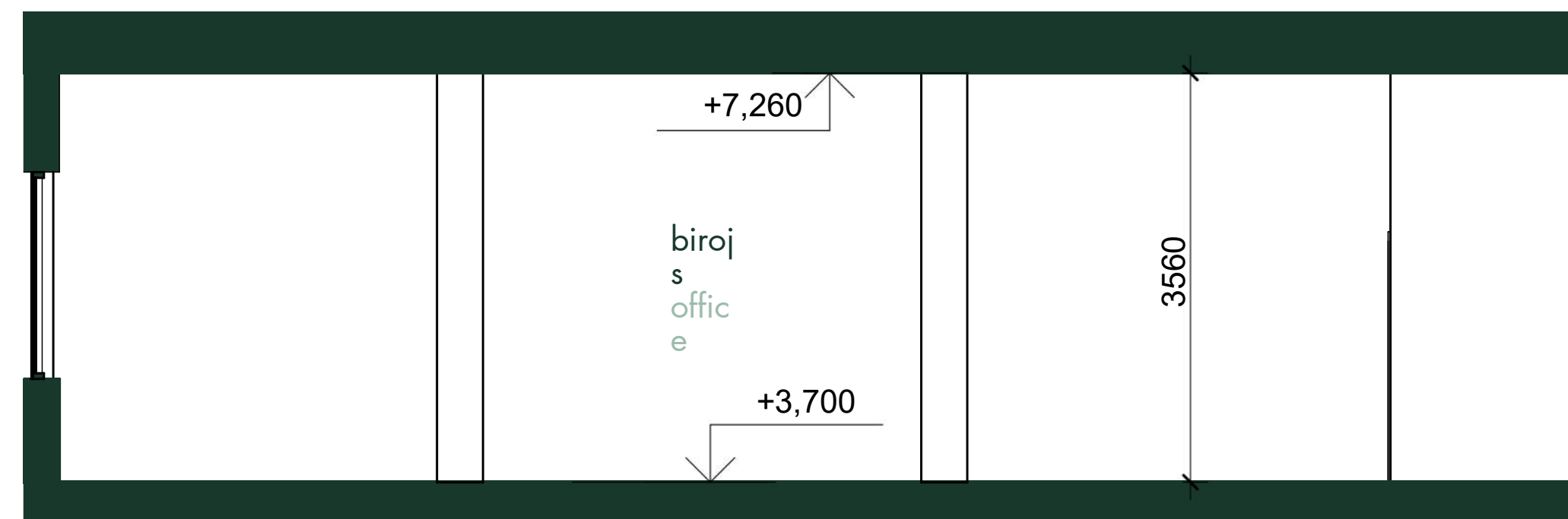
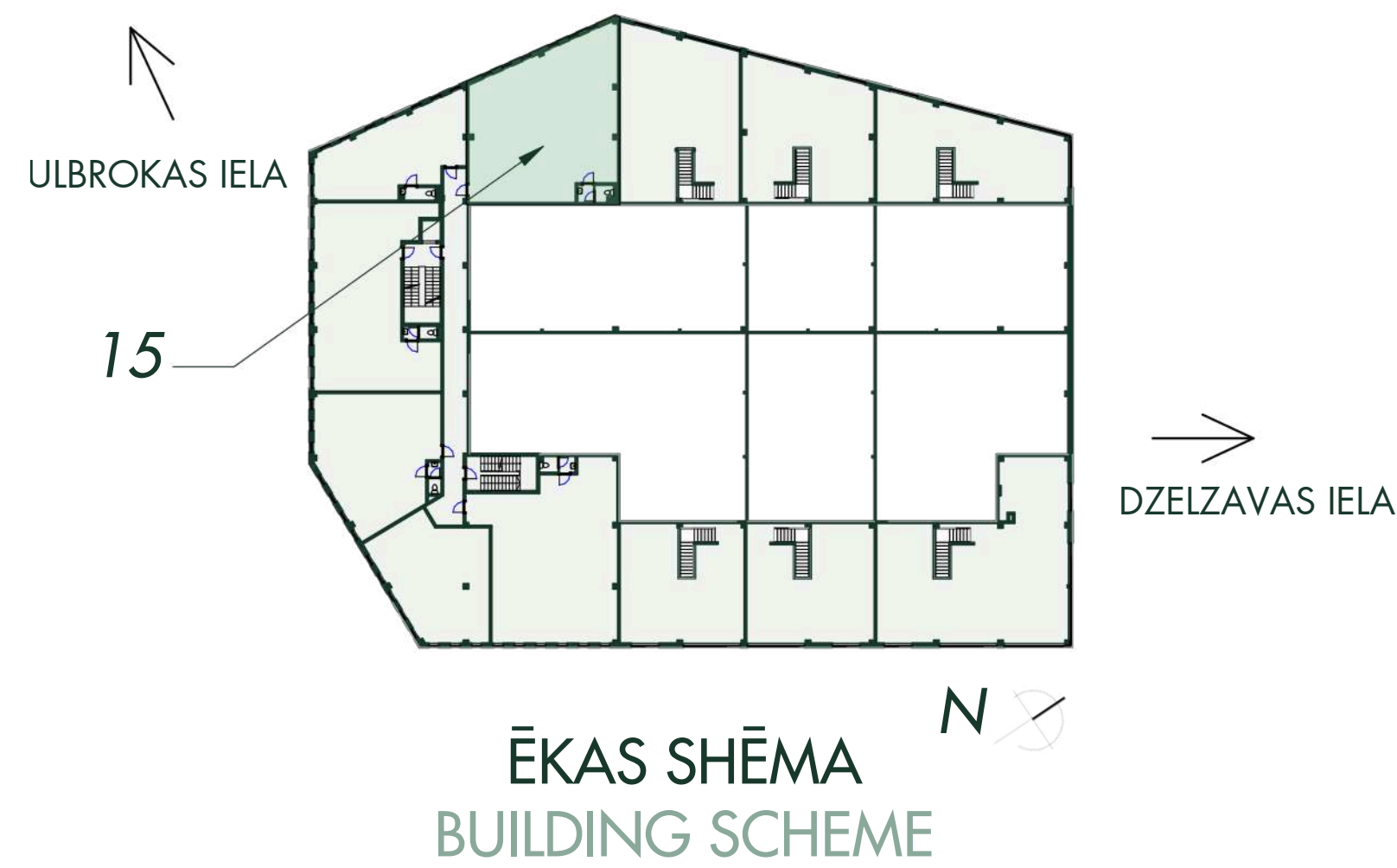
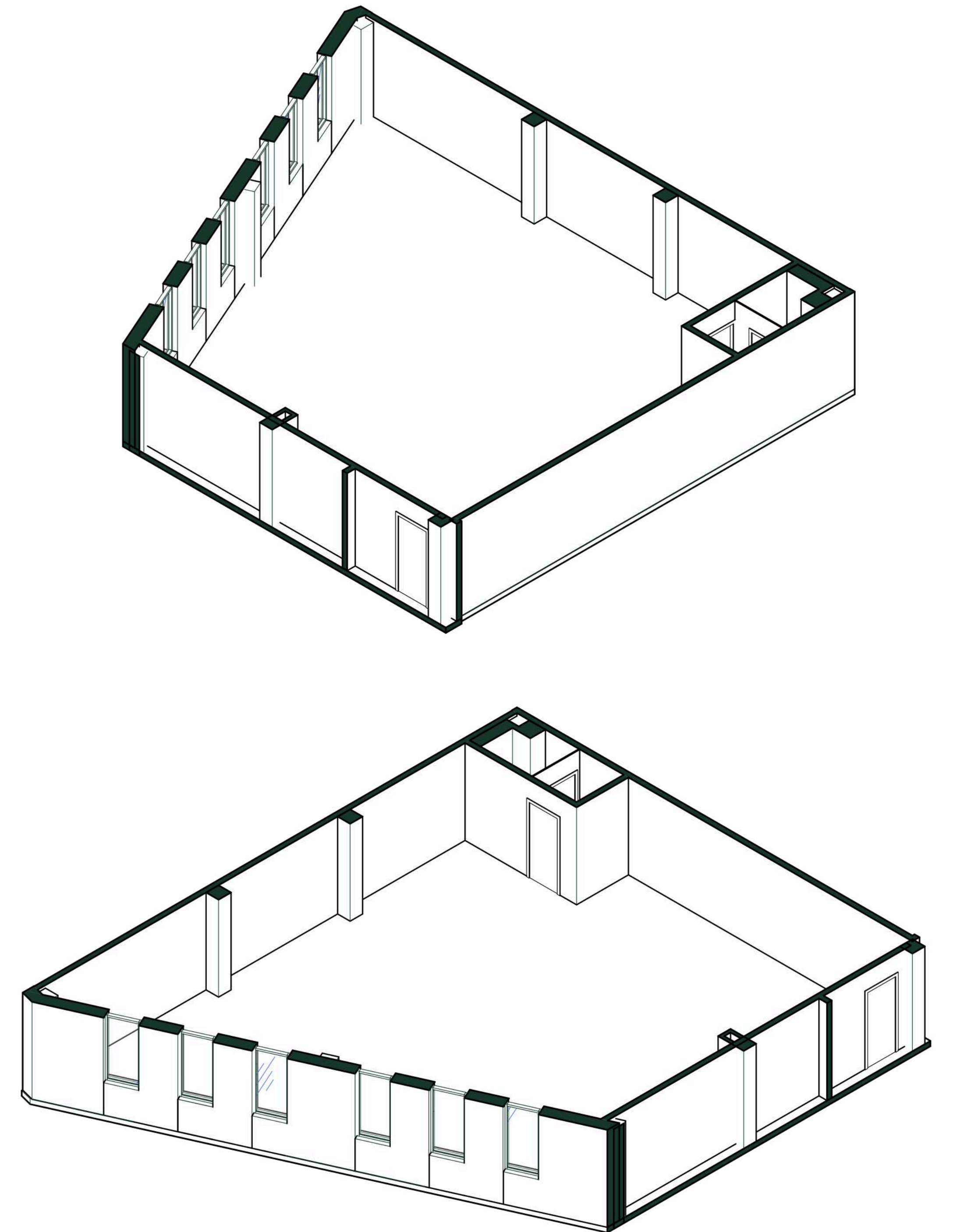


A ēka - Birojs Nr. 15  
Building A - Office No. 15

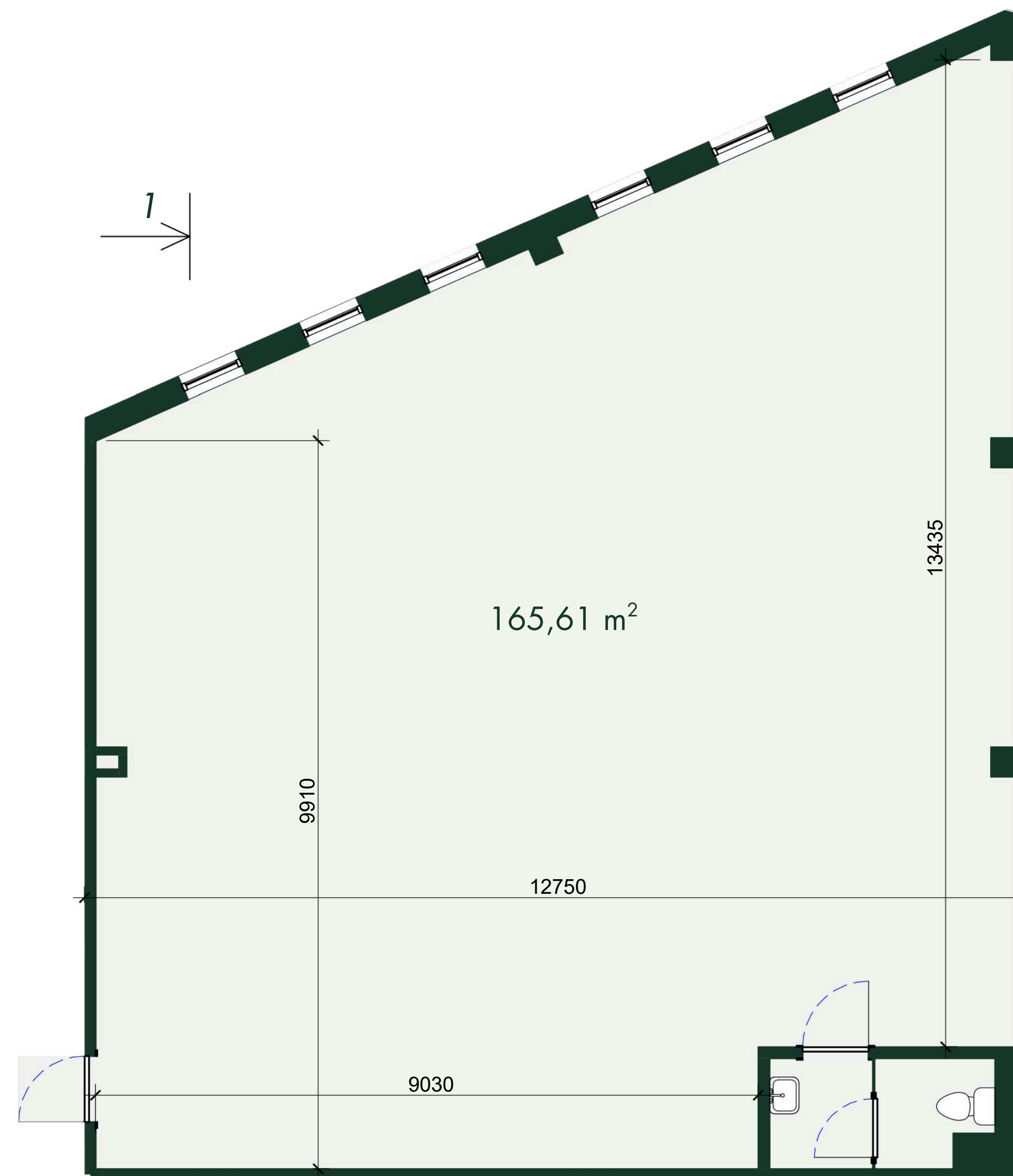


ŠĶĒRSGRIEZUMS 1-1  
SECTION 1-1



NOMAS TELPU NR. 15 EKSPĻIKĀCIJA  
DESCRIPTION OF RENTAL PREMISES NO. 15

Stāvs Floor	Nosaukums Name	Platība (m <sup>2</sup> ) Area (m <sup>2</sup> )
2	Birojs Office	165,61
Kopējā īrnieka Nr.15 Total tenant No.15		165,61



1

STĀVA PLĀNS  
FLOOR PLAN

**Contacts**

*Jana Sumaruka*

Rent inquiries (LV & ENG)

[jana@estmakcapital.eu](mailto:jana@estmakcapital.eu)

371 262 32 225

*Jekaterina Šumigai*

Rent inquiries (EST & ENG)

[jekaterina@estmakcapital.ee](mailto:jekaterina@estmakcapital.ee)

372 5464 0477